

# 1,2,3, **VOTE**!

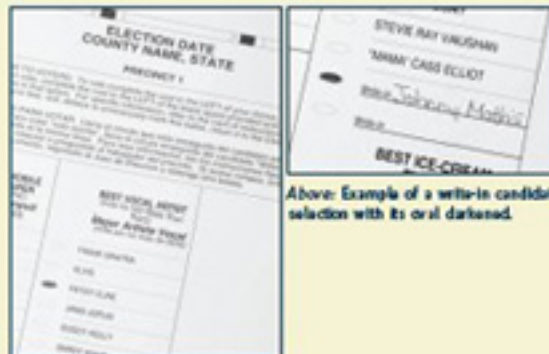
## Optical Scan Voting With the ES&S Model 100

### 1 MARK BALLOT

Using a paper ballot, make your selections for a particular candidate or issue by filling in ovals on the ballot. Read the special feature on the back of this card to learn how to correctly mark your ballot.

- **WRITE-IN CANDIDATES**

For write-in candidates, fill in the oval next to the words "WRITE IN" and write the candidate's name on the line.



Above: Example of a write-in candidate selection with its oval darkened.

### 2 INSERT BALLOT

Insert your ballot into the ballot acceptor. The Model 100 will accept ballots in any orientation (backward, upside down, etc.). To keep a paper ballot from view, a privacy sleeve may be requested from the poll worker.



### 3 REVIEW BALLOT

Check the LCD screen to see whether there are any issues with the ballot such as overvoting, undervoting, and blank ballots. Press "RETURN" to get the ballot back to make changes, or press "ACCEPT" to submit the ballot.



Election Systems  
& Software

MAINTAINING VOTER CONFIDENCE.  
ENHANCING THE VOTING EXPERIENCE.

[www.essvote.com](http://www.essvote.com)