

# Macon County, Franklin, Highlands Draft CTP



Draft Comprehensive Transportation  
Plan 2011

Ryan Sherby - SWRPO



# Today's Presentation

---

- Overview of the planning process
- Review of the Plan
- The adoption process
- The RPO and prioritization



# Historical Overview

---

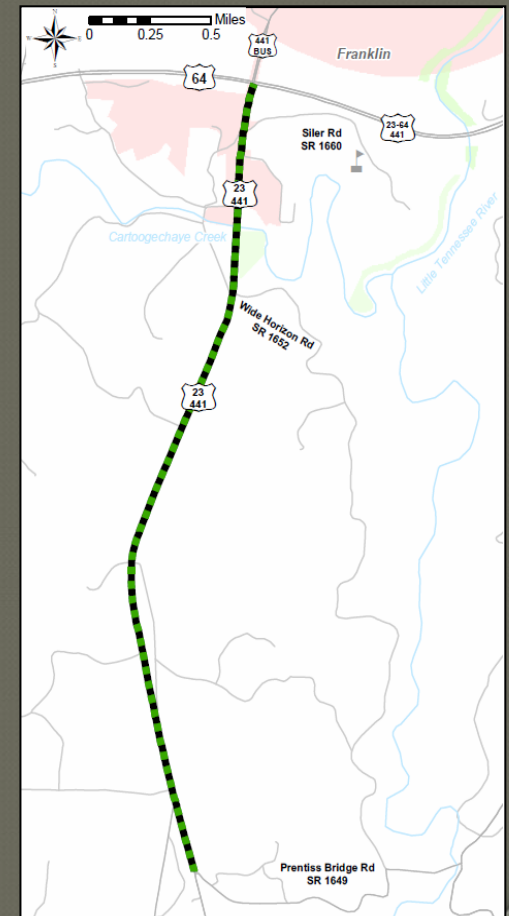
- May 26<sup>th</sup> 2009 – Macon County Commissioners appointed committee
  - Bobby Kupperts                      Kevin Korbin (R Beale)                      Verlin Curtis
  - Sissy Patillo                      Mark Maxwell                      Dennis DeWolf
  - Marvin Grant Pam Forshee                      Sharon Taylor
  - Mark West                      Ed Shatley                      Derek Roland
  - Jack Morgan Karl Gillespie                      Brian Burch
  - Kim Angel                      Cooper Sellers                      Mike Gruberman
- June 25<sup>th</sup> 2009 – 1<sup>st</sup> meeting of the transportation steering committee
- October 1<sup>st</sup> 2009 – Public Survey Closed
- August 26<sup>th</sup> 2010 - Public Workshop – Work to date presented
- March 24<sup>th</sup> 2011 - Draft Plan presented to the public
- Public comment accepted at every steering committee meeting



# The Plan – Highway Element

- US 23-441 (Georgia Road) US 64 to Prentiss Bridge Road (MAC0001-H)

The CTP proposes improving this section of road to at least boulevard standards. This would be accomplished by removing the center turn lane and installing a median. Additionally, local support exists for replacing some or all of the signals with a “super-street” design.

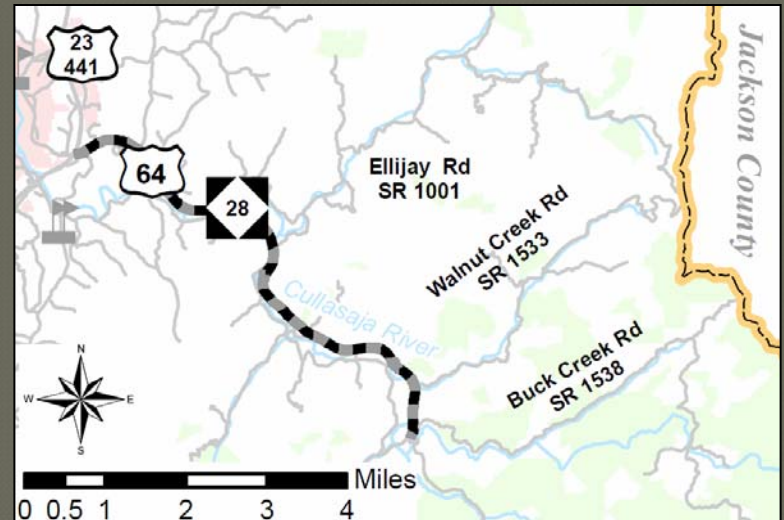




# The Plan – Highway Element

- US 64 – NC 28 from US 23 – 441 to Buck Creek Road (MAC0002-H)

The CTP proposal would improve the roadway to 12-foot lanes from the US 23-64 bypass of Franklin to Buck Creek Road. This alternative was chosen over a major widening because of local preference. While not fully relieving traffic congestion, it was deemed acceptable to pursue minor upgrades that could serve as a stepping stone to meeting future needs if future CTP revisions continue to identify US 64 – NC 28 as a deficiency.

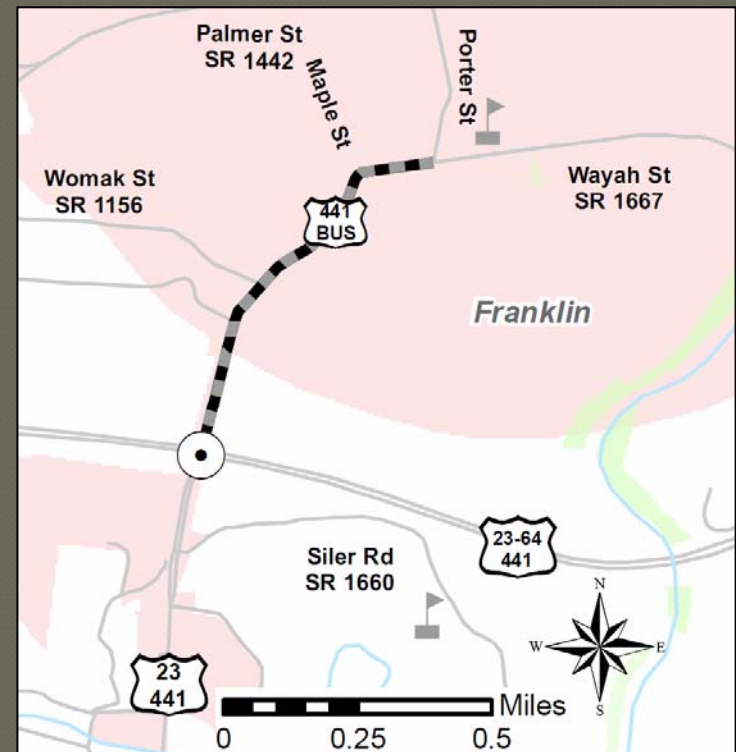




# The Plan – Highway Element

- US 441 Business from US 23 – 441 to Porter Street (MAC0003-H)

It is proposed that intersection improvements be made along US 441 Bus to improve traffic flow through three intersections. Improvements would start at US 23-64-441 and include the intersections with Womack Street, Maple Street, and Porter Street-Wayah Street. According to the Congestion Management study, the worst leg of the US 441 Business/Wayah Street and Porter Street intersection can be improved to LOS C in 2035 by utilizing a roundabout (traffic circle), and the worst leg of the US 441 Business/Wayah Street and Maple Street intersection can be improved to LOS D in 2035. These intersections are currently operating at LOS D and F respectively.

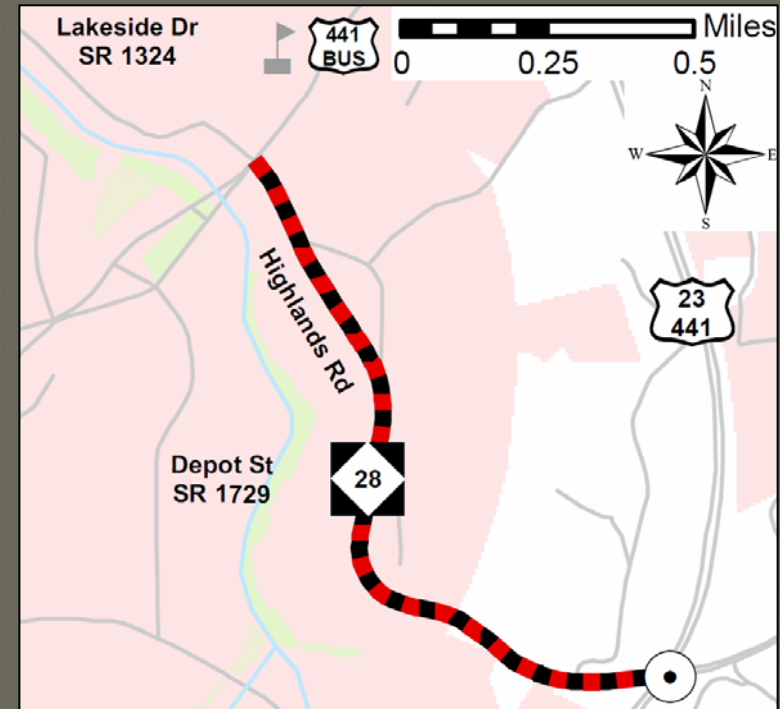




# The Plan – Highway Element

- NC 28 – Highlands Road from US 441 to US 441 Business (MAC0004-H)

It is proposed that NC 28 – Highlands Road be widened to a 4-lane divided boulevard with limited control of access. The improved capacity of 31,900 vpd would be able to handle current and projected traffic volumes. During the development of this CTP, the Town of Franklin expressed a desire to widen NC 28 to a 4-lane divided boulevard. This roadway is an important access route into the Town of Franklin and designated a “Potential Gateway” in the 2008 Franklin Main Street Program.

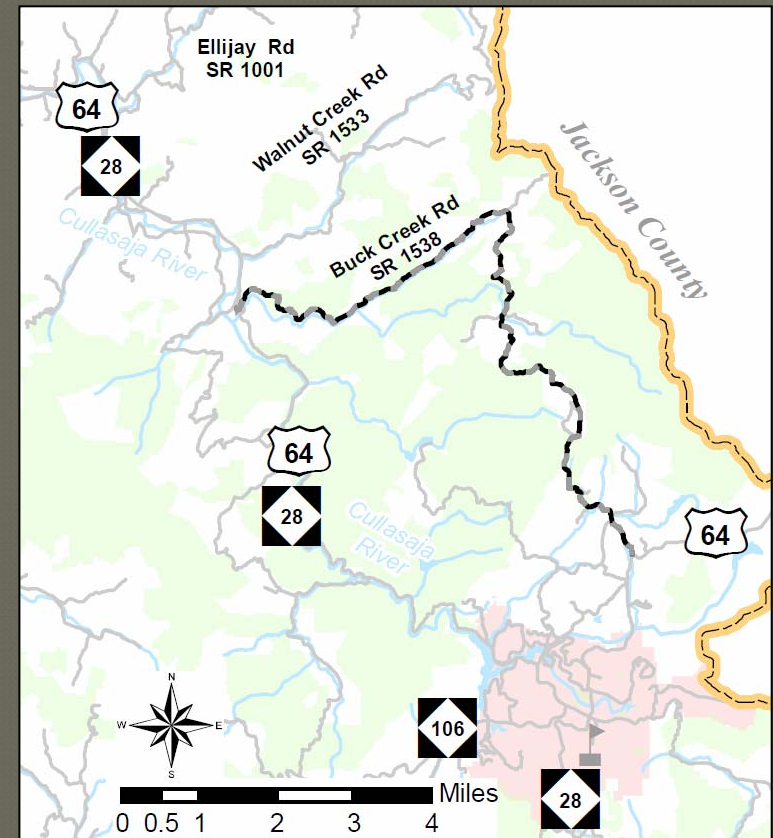




# The Plan – Highway Element

- Buck Creek Rd from NC 28 to US 64 (MAC0005-H)

A TIP project, R-3623, is already underway to improve the first mile of Buck Creek Road from US 64 – NC 28. Division 14 expects to improve the roadway to 10 foot lanes with a 4 to 6 foot unpaved shoulder. Physical constraints may also require retaining walls. The CTP proposes extending these improvements to the entire facility between US 64 – NC 28 and US 64.

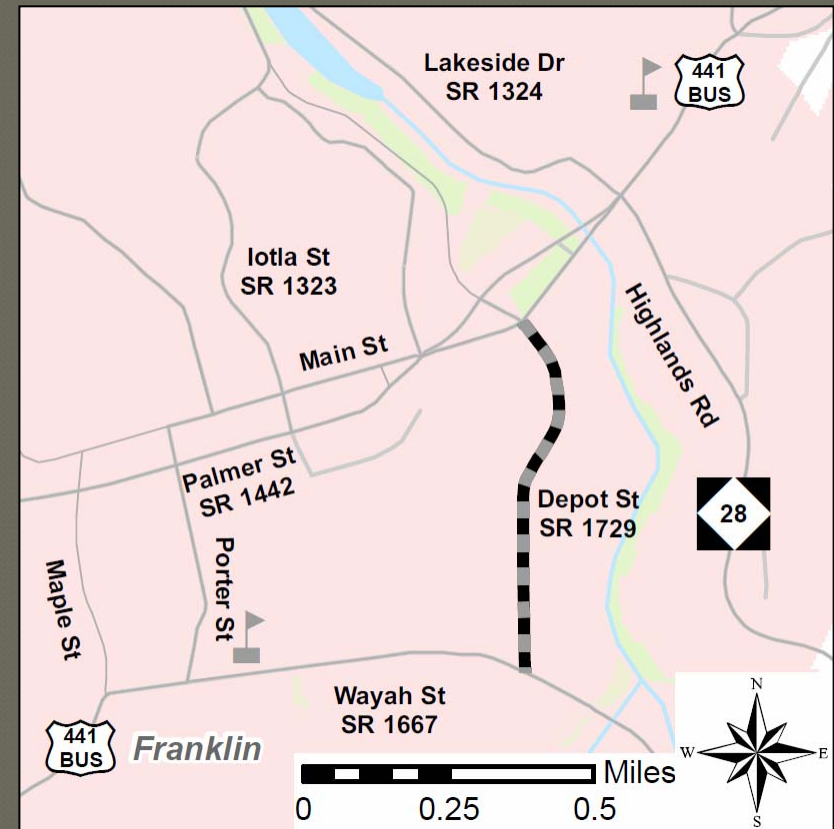




# The Plan – Highway Element

- Depot Street from US 441 Business to Wayah Street (MAC0006-H)

The CTP proposal of three-lane widening would require expanding NCDOT right-of-way (ROW) to 80ft from 60ft. The improved traffic flow would provide a capacity of 15,400 vpd, lower than the projected volume of 16,900 vpd. The center turn lane would remove vehicles waiting to make left turns. Through traffic would benefit without compromising access to the existing development. This improvement when combined with the recommendations from the Franklin Main Street Program is expected to preserve mobility at a level acceptable to the town.



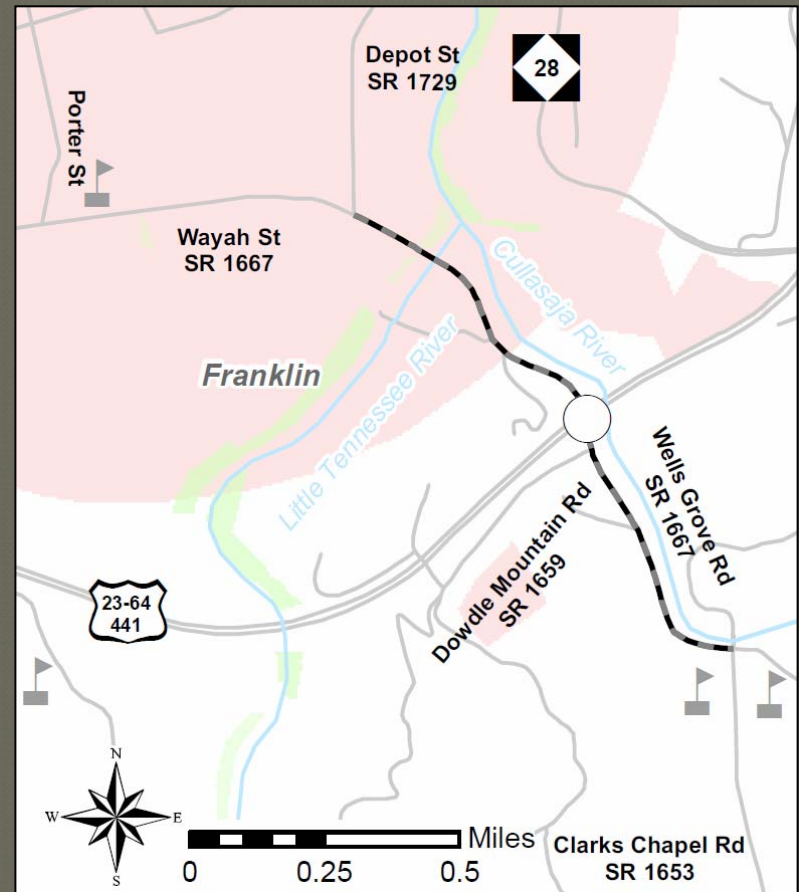


# The Plan – Highway Element

- Wells Grove Road from Wayah Street to Clarks Chapel Road (MAC0007-H)

The CTP recommendation is to widen Wells Grove Road to full 12 foot lanes.

Accommodations for bicyclist should also be included as this facility is part of the state designated bike route, “Mountain to the Sea.” Intersection improvements at Dowdle Mountain Road (SR 1659), Clarks Chapel Road (SR 1665), and Wayah Street – Depot Street are also recommended. See MACON0006-H for more information about Depot Street.





# The Plan – Highway Element

---

- Other Roadway Improvements
  - (MAC0008-H) US 19 from Cherokee to Swain County line near Topton, 12' lanes, 4' paved shoulders, possible truck climbing lane
  - (MAC0009-H) US 23-441 from Jackson County to Georgia, upgrade to expressway standards per Strategic Highway Corridor (SHC)
  - (MAC0010-H) US 64 from Clay County to Jackson County, SHC
  - (MAC0011-H) NC 106 from US 64 to Georgia State Line, 12' lanes, 4' paved shoulders, Highlands specific improvements (2009 Study)
  - (MAC0012-H) Cat Creek Road from US 23-441 to Franklin Town Limits, 10' lanes and paved shoulders
  - (MAC0013-H) Hicks Road from US 64 – NC 28 to US 64, 10' lanes and potentially paved shoulders
  - (MAC0014-H) Iotla Church Rd from NC 28 to Burningtown Road, 10' lanes and paved shoulders
  - (MAC0015) Old Murphy Road from Palmer Street to Sloan Road, 12' lanes, 4' paved shoulders



# The Plan – Highway Element

---

- Other Roadway Improvements
  - (MAC0016-H) Siler Road from US 23-441 to SCC, 12' lanes, 4' paved shoulders, bicycle and pedestrian accommodations
  - (MAC0017-H) Sloan Road from Old Murphy Road to US 64, 12' lanes, 4' paved shoulders
- Town of Franklin's Main Street Plan Projects
  - (MAC0018-H) Wayah Street from US 441 Bus to Wells Grove Rd
  - (MAC0019-H) Womack Street from US 441 Bus to Old Murphy Rd
  - (MAC0020-H) Main Street & Palmer Street from Porter to Depot
  - (MAC0021-H) Lakeside Drive from US 441 Bus to Lakeside Dr
  - (MAC0022-H) Lake Emory Road from US 441 Bus to Lakeside Dr
  - (MAC0023-H) Porter Street from Wayah Street to Palmer Street



# The Plan – Highway Element

---

- Town of Franklin Minor Connectors
  - (MACO0024-H) Depot Street Extension from Depot Street (SR 1729) to US 23-64-441 opposite Dowdle Mountain Road (SR 1659)
  - (MACO0025-H) Belleview Park Road Extension from Belleview Park Road (SR 1703) to Wells Grove Road (SR 1667)
  - (MACO0026-H) Wayah Street Extension from Wayah Street (SR 1667) to NC 28 – Highlands Road see MACO0002-H
  - (MACO0027-H) From NC 28-Highlands Road to US 23-441
  - (MACO0028-H) From NC 28-Riverview Street to Lakeside Drive (SR 1324) for more information see MACO0004-H
  - (MACO0029-H) From Iotla Street (SR 1323) to Main Street-US 441 Bus
  - (MACO0030-H) From Main Street to Palmer Street opposite Harrison Avenue



# The Plan – Transit

---

- (MACO0001-T) New bus route between the Town of Franklin and the Town of Highlands utilizing US 64 – NC 28 and Buck Creek Road (SR 1536).
- (MACO0002-T) New bus route between the Town of Franklin and the Nantahala community utilizing Wayah Road (SR 1310).

Additionally, six locations were identified as potential park and ride lots. Two were constructed with 2009 American Recovery and Reinvestment Act funds during the CTP process. The other four are located at the following intersections:

- (MACO0003-T) NC 28 and Sanderstown Road (SR 1335)
- (MACO0004-T) US 23-441 and Coweeta Church Road (SR 1115)
- (MACO0005-T) Wayah Road (SR 1310) and Junaluska Road (SR 1401)
- (MACO0006-T) Ellijay Road (SR 1001) and US 64 – NC 28, possibly on the old Cullasaja Elementary School property



# The Plan – Bicycle

---

## New Facilities:

MACO0001-B: Siler Road from Macon Early College to Dowdle Mountain Road

## Improvement to Existing Facilities:

MACO0002-B: US 23-441 from Wide Horizon Road to Siler Road

MACO0003-B: US 64 – NC 28 from US 23-441 to Hicks Road

MACO0004-B: US 441 Bus from Lakeside Drive to Wayah Road Both Directions

MACO0005-B: NC 28 from US 441 Bus – Main Street to Swain County

MACO0006-B: NC 28 from US 441 Bus – Main Street to US 23-441

MACO0007-B: NC 106 from the Georgia State Line to US 64

MACO0008-B: Southards Road from Skeenah Road to US 64, also known as Alison Creek Road.

MACO0009-B: West Dills Creek Road from Southards Road to W Old Murphy Road.



# The Plan - Bicycle

---

MACO0010-B: W Old Murphy Road from Southards Road to Skeenah Road

MACO0011-B: Mullbery from the Georgia State Line to US 23-441

MACO0012-B: (Sam Corn Road - Perryman Cabe Road - River Valley Road) from the Georgia State Line to Middle Creek Road

MACO0013-B: Middle Creek Road from US 23-441 to Perryman Cabe Road

MACO0014-B: Windy Ridge Road from Perryman Cabe Road to Tessentee Rd

MACO0015-B: Joe Bradley Road from Perryman Cabe Road to US 23-441

MACO0016-B: Tessentee Road from US 23-441 east to end of state maintenance.

MACO0017-B: Brown Road from US 23-441 to Joe Bradley Road

MACO0018-B: Brown Road from US 23-441 to Joe Bradley Road

MACO0019-B: Hickory Knoll Road from Tessentee Road to Clarks Chapel Road

MACO0020-B: Clarks Chapel Road from Hickory Knoll Road to Prentiss Bridge Road

MACO0021-B: Prentiss Bridge Road from Clarks Chapel Road to Wide Horizon Drive



# The Plan - Bicycle

---

MACO0022-B: Riverside Road from Hickory Knoll Road to US 23-441

MACO0023-B: Fulcher Road from Clarks Chapel Road to Clarks Chapel Road Loop

MACO0024-B: Frazier Road (SR 1656) from Fulcher Road to Clarks Chapel Road

MACO0025-B: Pete McCoy Road from Clarks Chapel Road to Clarks Chapel Road Loop

MACO0026-B: Dowdle Mountain Road from Clarks Chapel Road to Wells Grove Road

MACO0027-B: C R Cabe Road from Dowdle Mountain Road to Dowdle Mountain Road Loop

MACO0028-B: Coweeta Lab Road from US 23-441 to Ball Creek Road

MACO0029-B: Coweeta Church Road from Coweeta Lab Road to US 23-441

MACO0030-B: Bell Road from Coweeta Church Road to Pine Road  
MACO0031-B: Pine Road from Bell Road to Bates Branch Road

MACO0032-B: Addington Branch Road from Coweeta Church Road to South Skeenah Road



# The Plan - Bicycle

---

MACO0033-B: Skeenah Road from Addington Branch Road to South Skeenah Road

MACO0034-B: Stamey Mountain Road from South Skeenah Road to Belle Dondle Road

MACO0035-B: Belle Dondle Road from Middle Skeenah Road to US 23-441

MACO0036-B: Union School Road from Middle Skeenah Road to Addington Branch Road

MACO0037-B: Siler Road from US 23-441 to Macon Early College

MACO0038-B: Olive Hill Road from Airport Road to Middle Burningtown Road

MACO0039-B: Salder Mountain Road from Burningtown Road to Rose Creek Road

MACO0040-B: Onion Mountain Road from Rabbit Creek Road to Ellijay Road

MACO0041-B: Little Ellijay Road from Walnut Creek Road to Ellijay Road

MACO0042-B: Walnut Creek Road from Little Ellijay Road to US 64 – NC 28

MACO0043-B: Cheney Lane from Buck Creek Road to Flat Mountain Road

MACO0044-B: Flat Mountain Road from Cheney Lane to US 64

MACO0045-B: Horse Cover Road from Fifth Street to US 64



# The Plan - Bicycle

---

MACO0046-B: River Road from US 64 – NC 28 to US 64 – NC 28 Loop

MACO0047-B: Depot Street from US 441 Bus to US 441 BUS

MACO0048-B: Cat Creek Road from US 23-441 to Saunders Road

MACO0049-B: Ferguson Road from Rabbit Creek Road to Saunders Road

MACO0050-B: Cart Slagle Road from Wayah Road to US 64

MACO0051-B: John Teague Road from Wide Horizon Drive to US 64

MACO0052-B: Bates Branch Road from Pine Road to Addington Branch Road

MACO0053-B: Middle Skeenah Road from Belle Dondle Road to Addington Branch Road

MACO0054-B: Middle Burningtown Road from Olive Hill Road to Burningtown Road

MACO0055-B: Fifth Street from Horse Cover Road to Highlands School

MACO0056-B: Harrison Ave from US 441 Bus to Wind Gap Road



# The Plan - Pedestrian

---

## New Facilities:

MACO0001-P (Franklin): Siler Road from US 23-441 to Dowdle Mountain Road

MACO0002-P (Franklin): US 23-441 from Belden Circle to Wide Horizon Road

MACO0003-P (Franklin): Dowdle Mountain Road from Wells Grove Road (to Wiley Brown Road

MACO0004-P (Franklin): Wells Grove Road from Dowdle Mountain Road to Clarks Chapel Road

MACO0005-P (Franklin): A western loop including West Palmer Street, Old Murphy Road, Sloan Road, Carolina Drive, Roller Mill Road, and Orchard View Drive.

MACO0006-P (Franklin): Lakeside Drive from US 441 Bus to Lake Emory Road and Lake Emory Road from Lakeside Drive to US 441 Bus.

MACO0007-P (Franklin): Watauga Street and Dan Street from Lakeside Drive to US 4421 Bus.

MACO0008-P (Highlands): Oak Street from US 64 – NC 28 to First Street



# The Plan - Pedestrian

---

## Improvement to Existing Facilities:

MACO0009-P (Franklin): US 441 BUS from Womack Street to US 23-441

MACO0010-P (Franklin): US 23-441 from US 441 Bus to Belden Circle

MACO0011-P (Franklin): US 441 BUS from NC 28 – Highlands Road to Dan Street

MACO0012-P (Franklin): Wells Grove Road from Depot Street (SR 1729) to Dowdle Mountain Road



# The Plan - Multimodal

---

## *Little Tennessee Greenway, Local ID: MACO0001-M*

The Little Tennessee Greenway runs from Suli March at the intersection of Riverview Street (1462) and Arthur Drake Road in the north 4.7 miles to the Cartoogachaye Creek in the south. Currently the Greenway must cross the Little Tennessee River at US 421 Bus. The crossing includes a temporary trail, ramp, and two road crossings. A bridge replacement project B-5125 will address the issues directly related to it, but additional improvements will be needed from the south end of Morris Trace to the north end of the Old Airport Trail to maintain and improve connectivity and mobility.



# The Adoption Process

---

The four entities that will consider adopting the set of CTP maps are as follows:

- Macon County – Consider hosting a public hearing prior to adoption
- Town of Franklin – Future presentation
- Town of Highlands – Future Presentation
- NCDOT – Board of Transportation, Transportation Planning Branch (Cooper Sellers will oversee)



**Adopted by:**

**Macon County**  
Date:

**Town of Franklin**  
Date:

**Town of Highlands**  
Date:

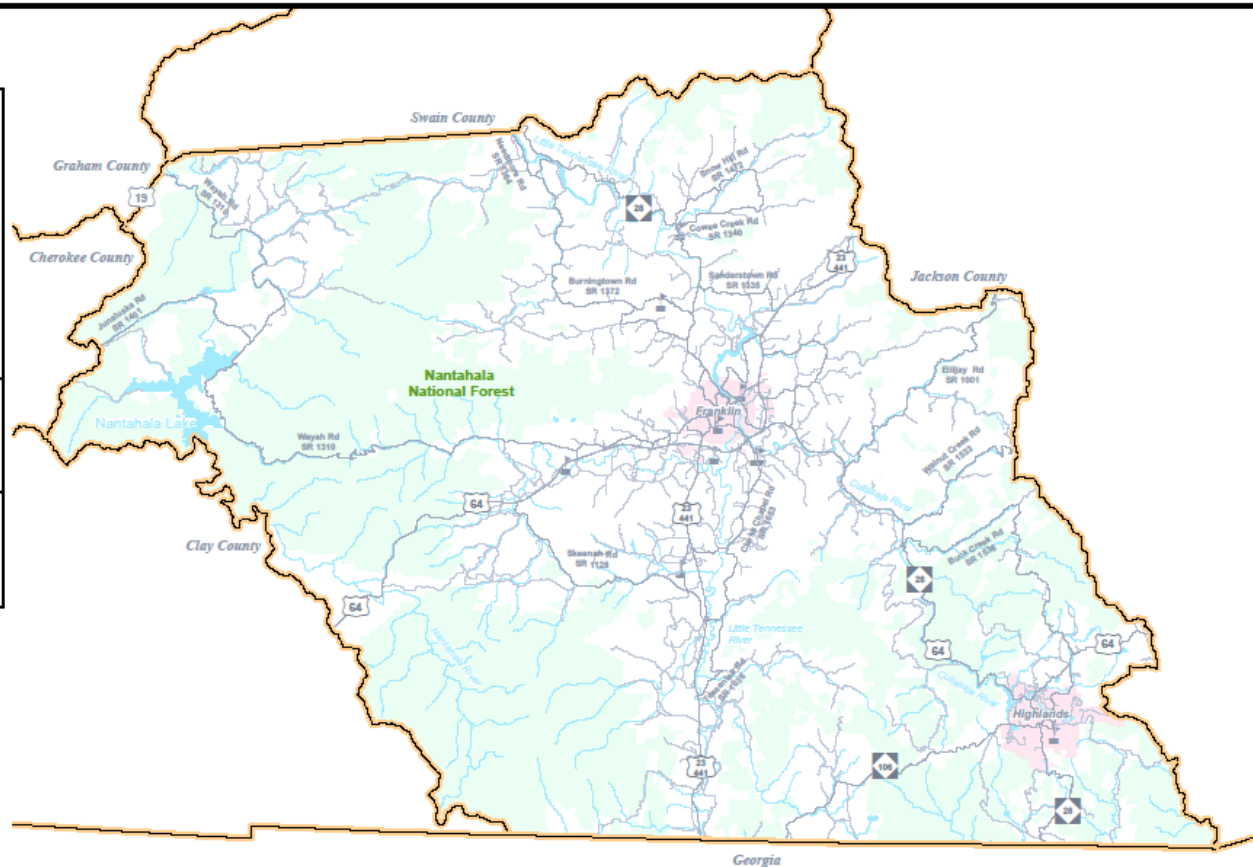
**NCDOT**  
Date:

**Endorsed by:**

**Southwestern RPO**  
Date:

**Recommended by:**

**Transportation Planning Branch**  
Date:



Sheet 1 Adoption Sheet

Sheet 2 Highway Map

Sheet 3 Public Transportation  
and Rail Map

Sheet 4 Bicycle Map

Sheet 5 Pedestrian Map

**Legend**

— Roads  
— Railroads  
— Rivers and Streams

🏫 Schools  
County Boundary  
Municipal Boundary  
Conservation Land

0 0.5 1 2 3 4 5 6 Miles



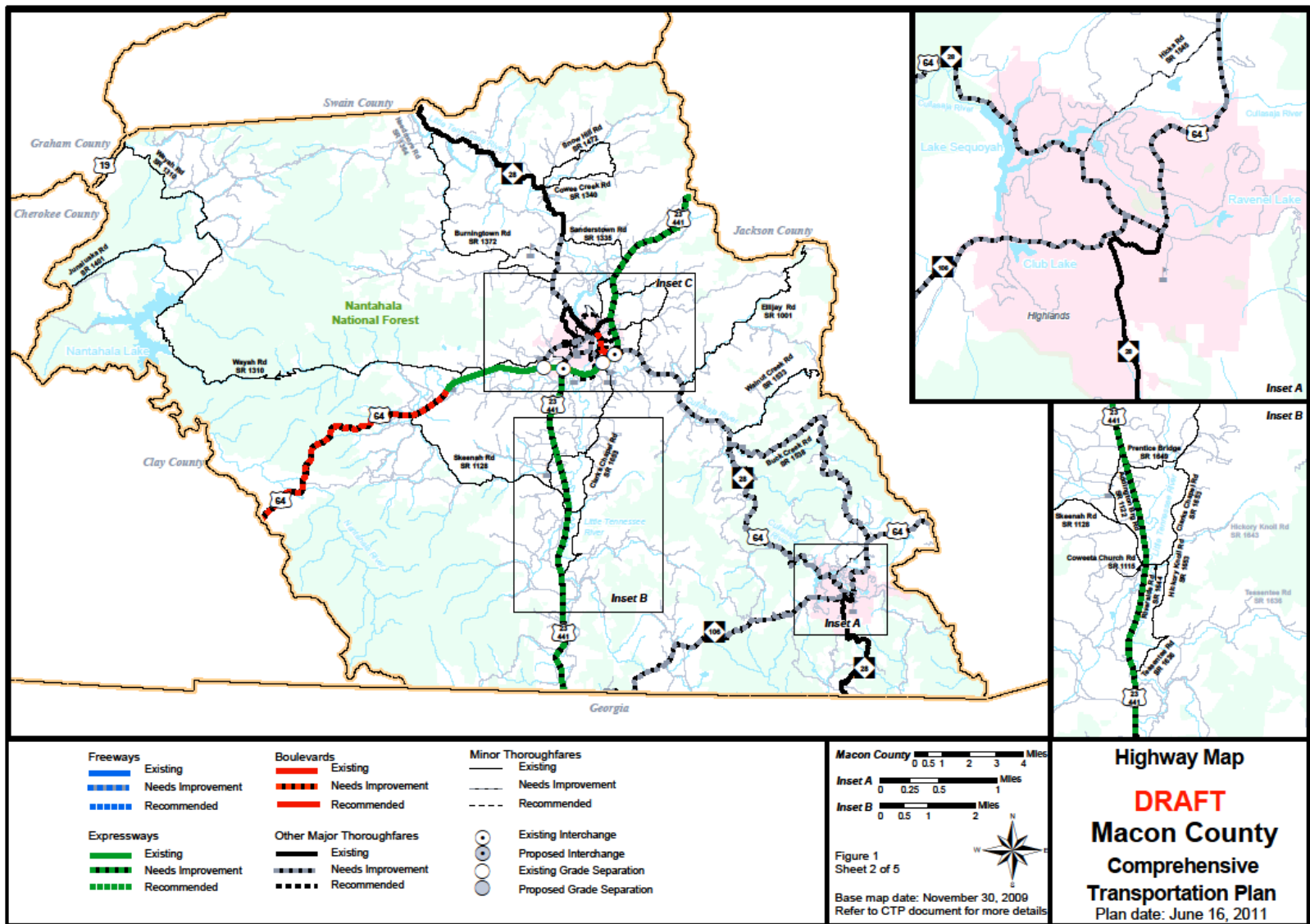
Figure 1  
Sheet 1 of 5

Base map date: November 30, 2009  
Refer to CTP document for more details

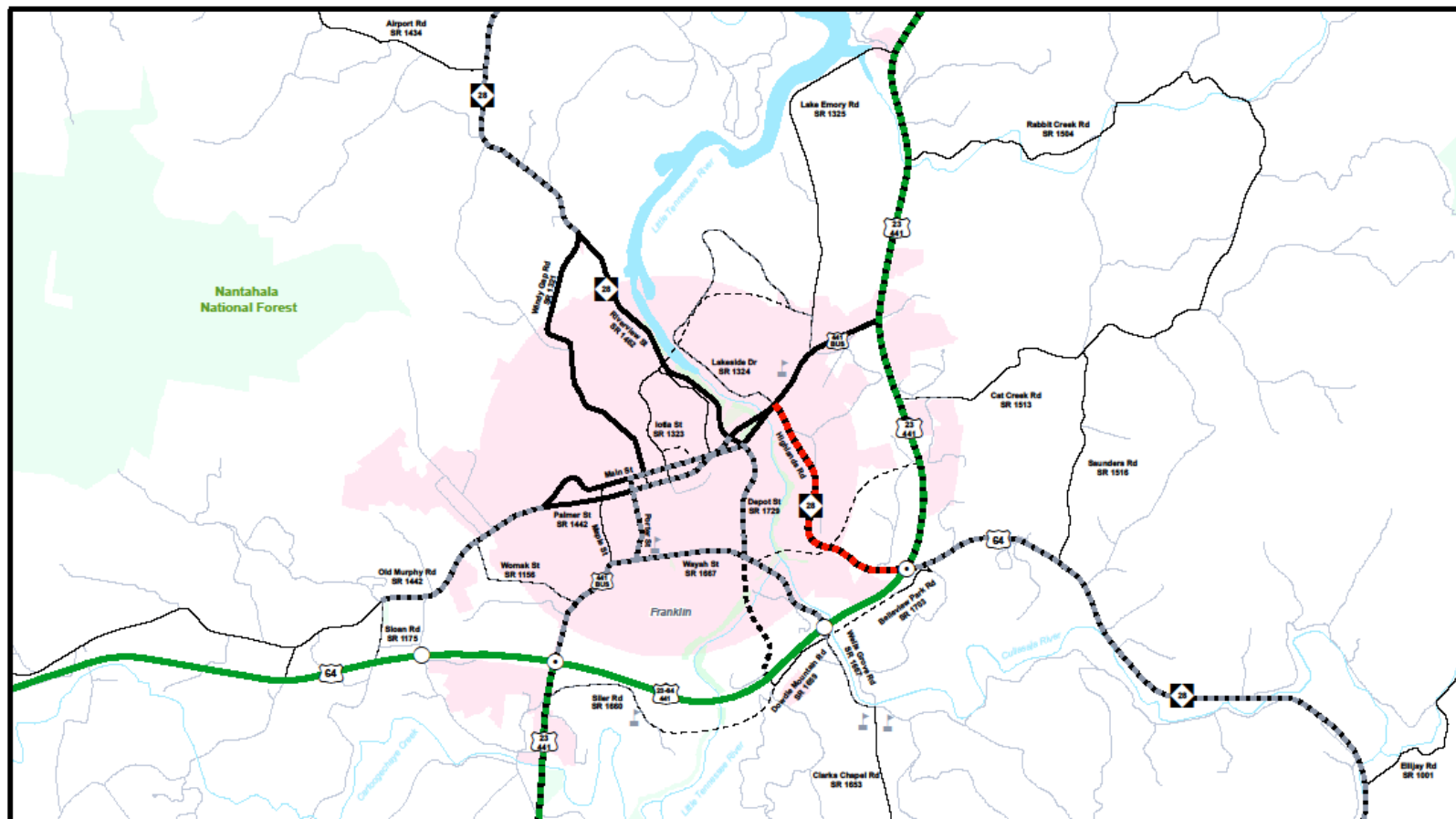
**Adoption Sheet**

**DRAFT**  
**Macon County**  
**Comprehensive**  
**Transportation Plan**  
Plan date: June 16, 2011









**Freeways**  
 Existing  
 Needs Improvement  
 Recommended

**Expressways**  
 Existing  
 Needs Improvement  
 Recommended

**Boulevards**  
 Existing  
 Needs Improvement  
 Recommended

**Other Major Thoroughfares**  
 Existing  
 Needs Improvement  
 Recommended

**Minor Thoroughfares**  
 Existing  
 Needs Improvement  
 Recommended

Existing Interchange  
 Proposed Interchange  
 Existing Grade Separation  
 Proposed Grade Separation

0 0.25 0.5 1 Miles

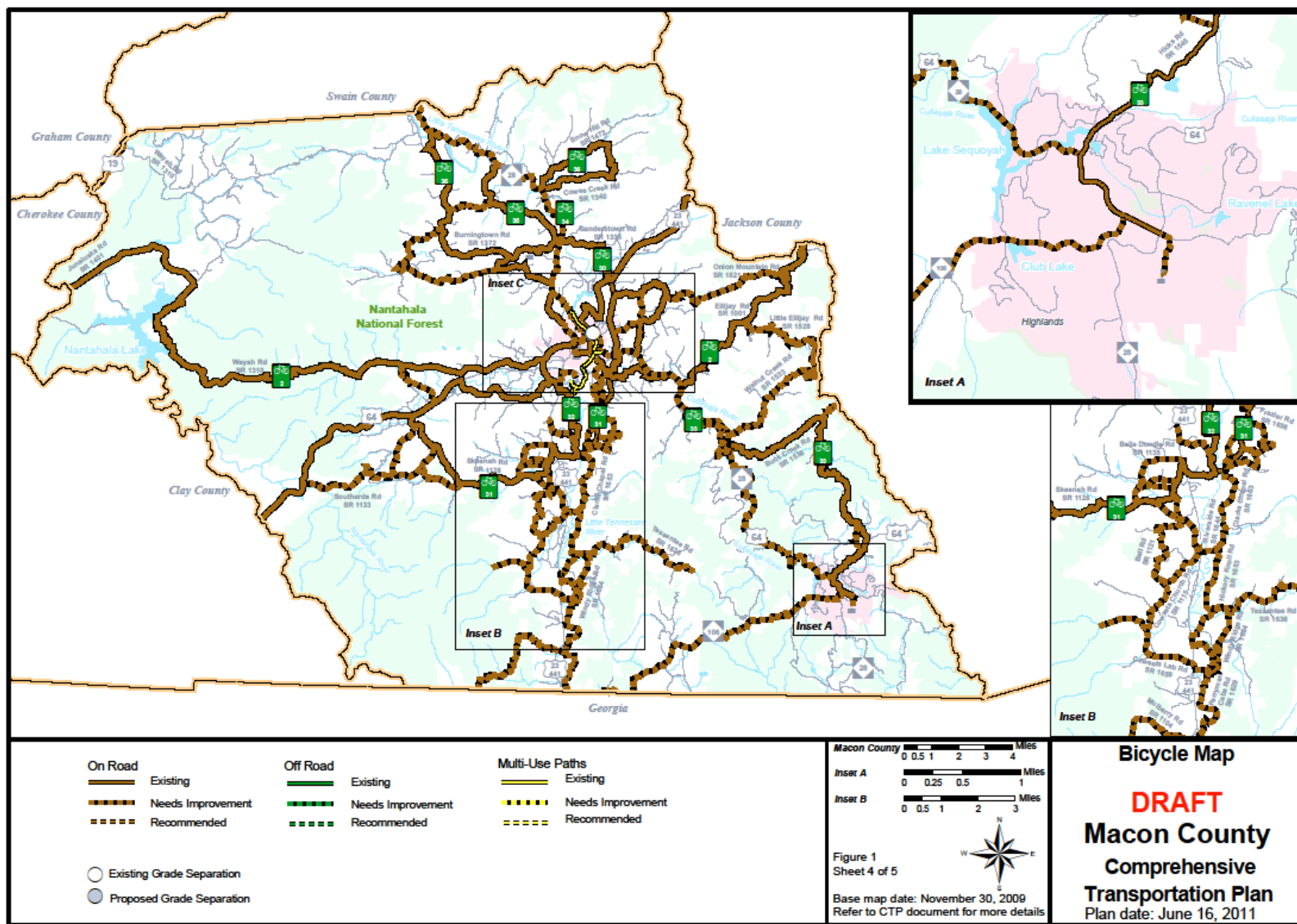


Figure 1  
 Sheet 2A of 5

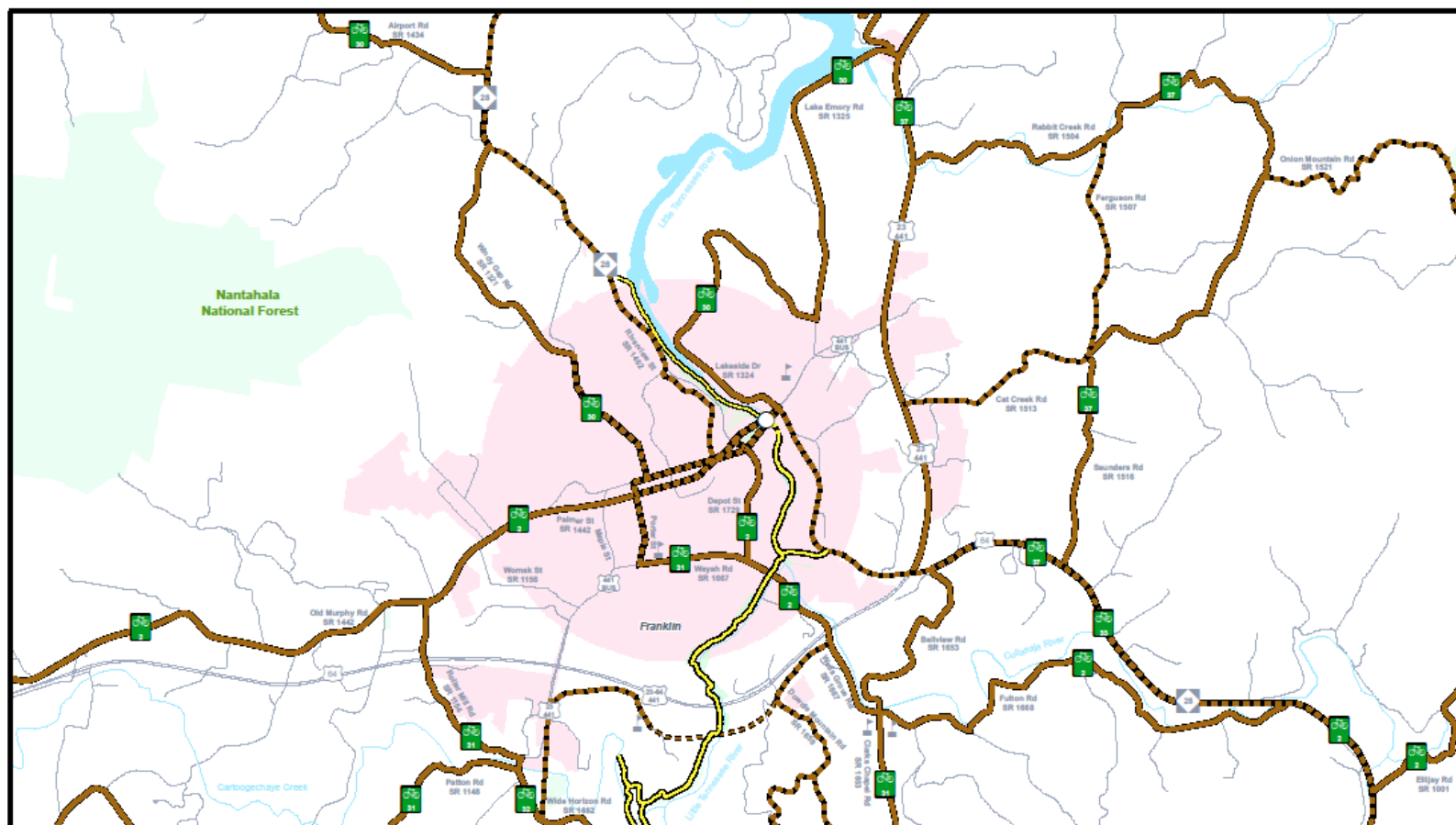
Base map date: November 30, 2009  
 Refer to CTP document for more details

**Highway Map  
 Inset C  
 DRAFT  
 Macon County  
 Comprehensive  
 Transportation Plan  
 Plan date: June 16, 2011**









**On Road**  
 Existing  
 Needs Improvement  
 Recommended

**Off Road**  
 Existing  
 Needs Improvement  
 Recommended

**Multi-Use Paths**  
 Existing  
 Needs Improvement  
 Recommended

Existing Grade Separation  
 Proposed Grade Separation

0 0.25 0.5 1 Miles



Figure 1  
 Sheet 4A of 5

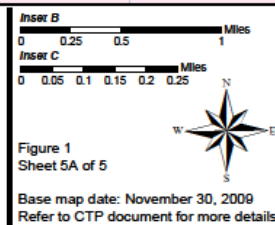
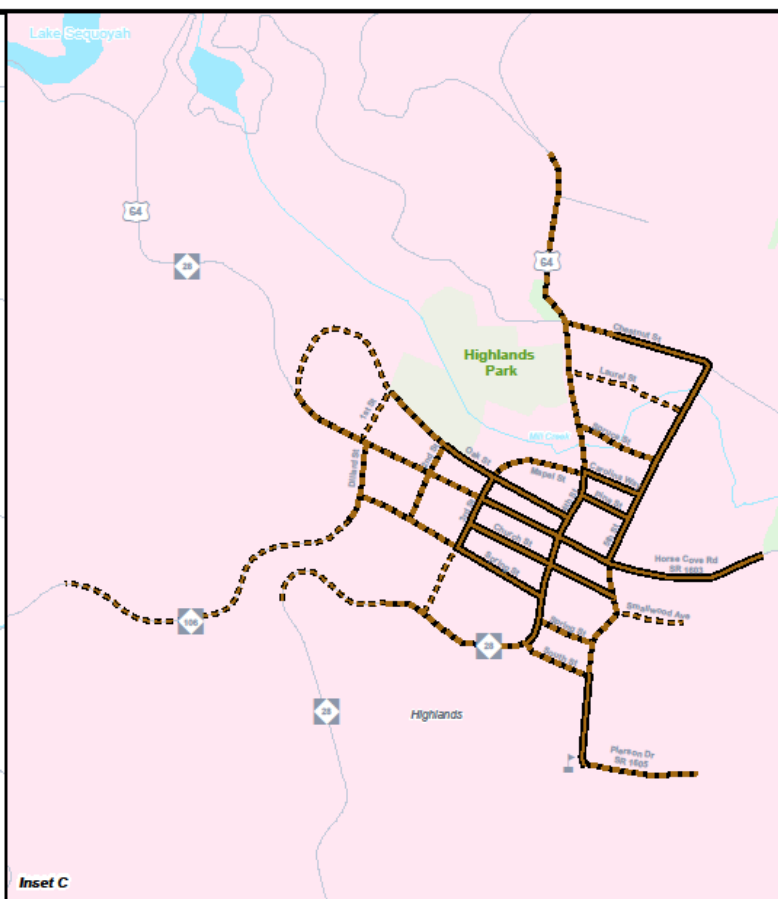
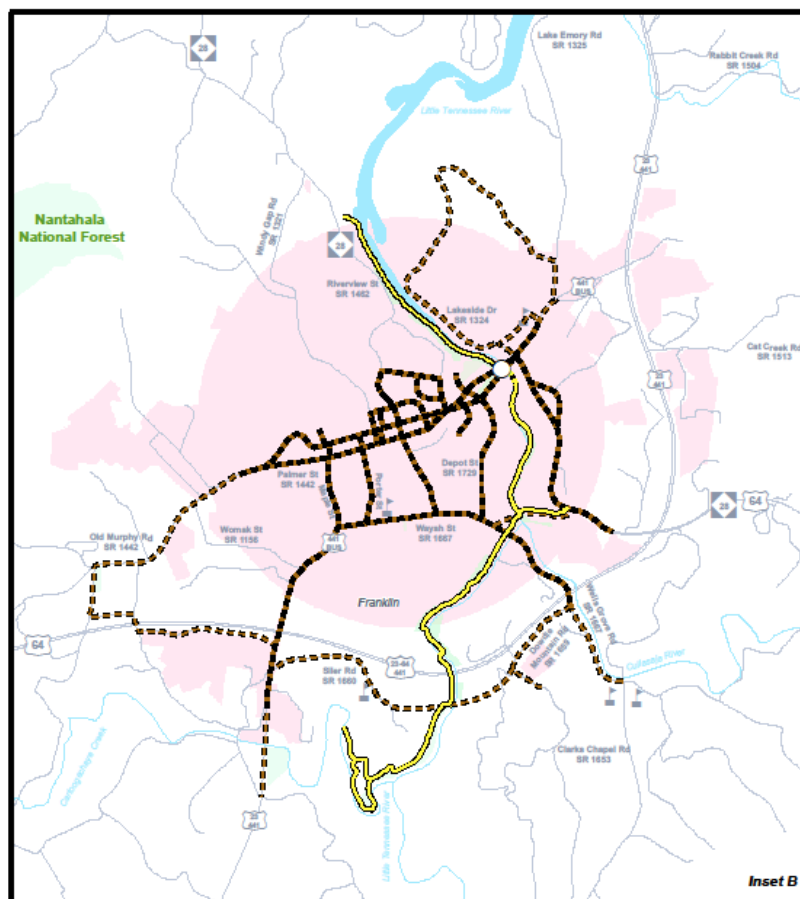
Base map date: November 30, 2009  
 Refer to CTP document for more details

**Bicycle Map  
 Inset C  
 DRAFT  
 Macon County  
 Comprehensive  
 Transportation Plan  
 Plan date: June 16, 2011**







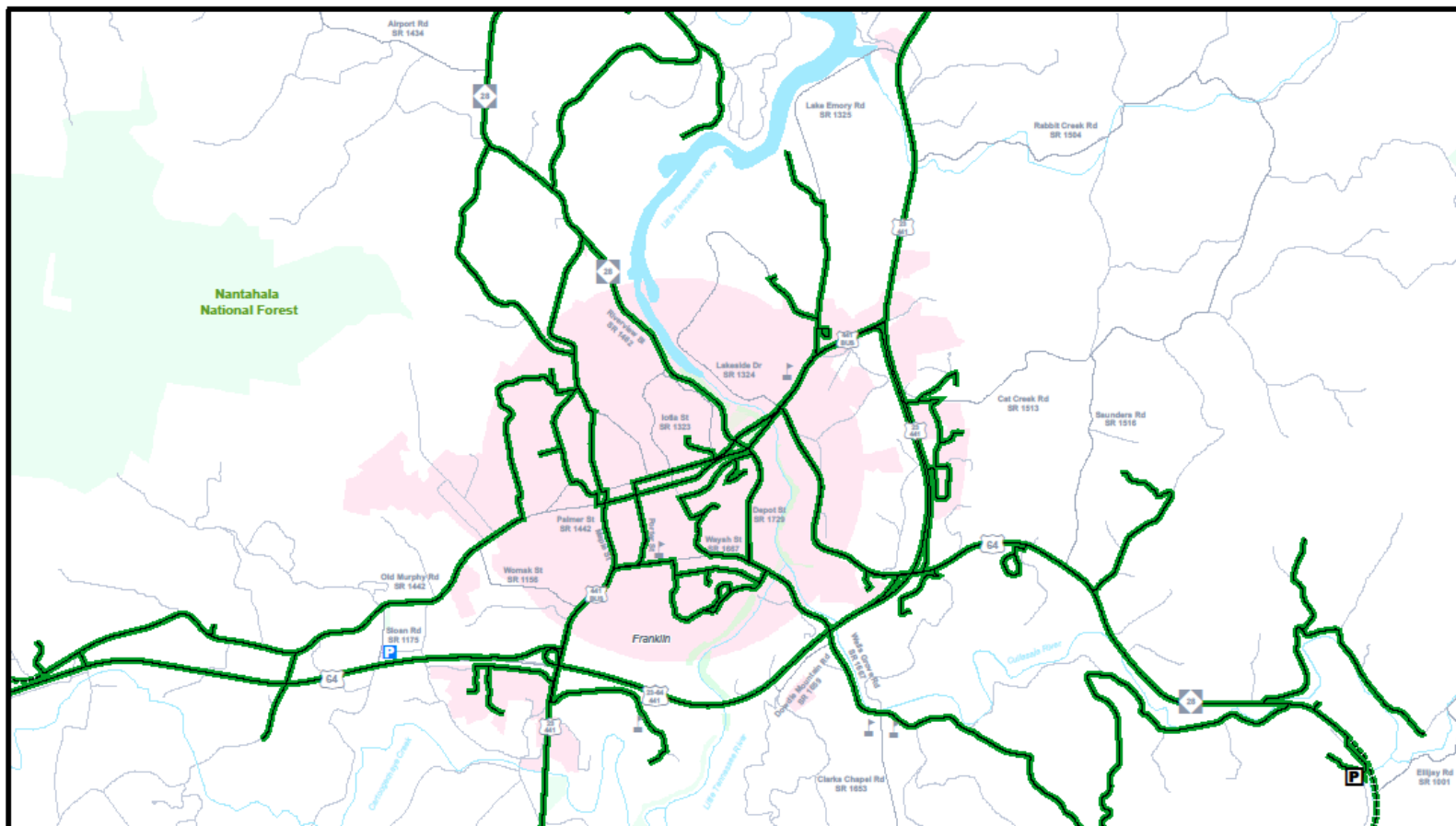


Pedestrian Map  
 Insets B and C  
**DRAFT**  
**Macon County**  
**Comprehensive**  
**Transportation Plan**  
 Plan date: June 16, 2011









#### Bus Routes

- Existing
- Needs Improvement
- Recommended

#### Fixed Guideway

- Existing
- Needs Improvement
- Recommended

#### Operational Strategies

- Existing
- Needs Improvement
- Recommended

#### Rail Corridor

- Active
- Inactive
- Recommended

#### High Speed Rail Corridor

- Existing
- Recommended

#### Rail Stops

- Existing
- Recommended

#### Intermodal Connector

- Existing
- Recommended

#### Park and Ride Lot

- Existing
- Recommended

0 0.25 0.5 1 Miles



Figure 1  
Sheet 3A of 5

Base map date: November 30, 2009  
Refer to CTP document for more details

**Public Transportation  
and Rail Map**  
**Inset B**  
**DRAFT**  
**Macon County**  
**Comprehensive**  
**Transportation Plan**  
Plan date: June 16, 2011



# From Planning to Implementation

---

As part of the State's new prioritization effort the Rural Planning Organization (RPO) will submit to the NCDOT the region's (6 western counties) priorities for bike, pedestrian and highway projects. This list will then be integrated into the State's methodology for the ranking and funding of projects across the state.

- Sarah Graham is the new RPO planner for Region A, [sgraham@regiona.org](mailto:sgraham@regiona.org)
- The chairman of the RPO is Ronnie Beale who has around 9 months left in his term, (elected March 22, 2010 for a 2-year term)
- The current Priority Needs List (PNL) is in draft form and can be found at [www.regiona.org/rpo.htm](http://www.regiona.org/rpo.htm) at the top of the page. The Transportation Advisory Committee is expected to adopt the list with minor changes at its September meeting.
- This plan puts Macon County in a strong position to seek future funding for its transportation infrastructure projects



# Contact Information

Ryan Sherby  
125 Bonnie Lane  
Sylva, NC 28779  
(828) 586-1962

[ryan@regiona.org](mailto:ryan@regiona.org)

[http://www.regiona.org/Macon\\_CTP.htm](http://www.regiona.org/Macon_CTP.htm)